

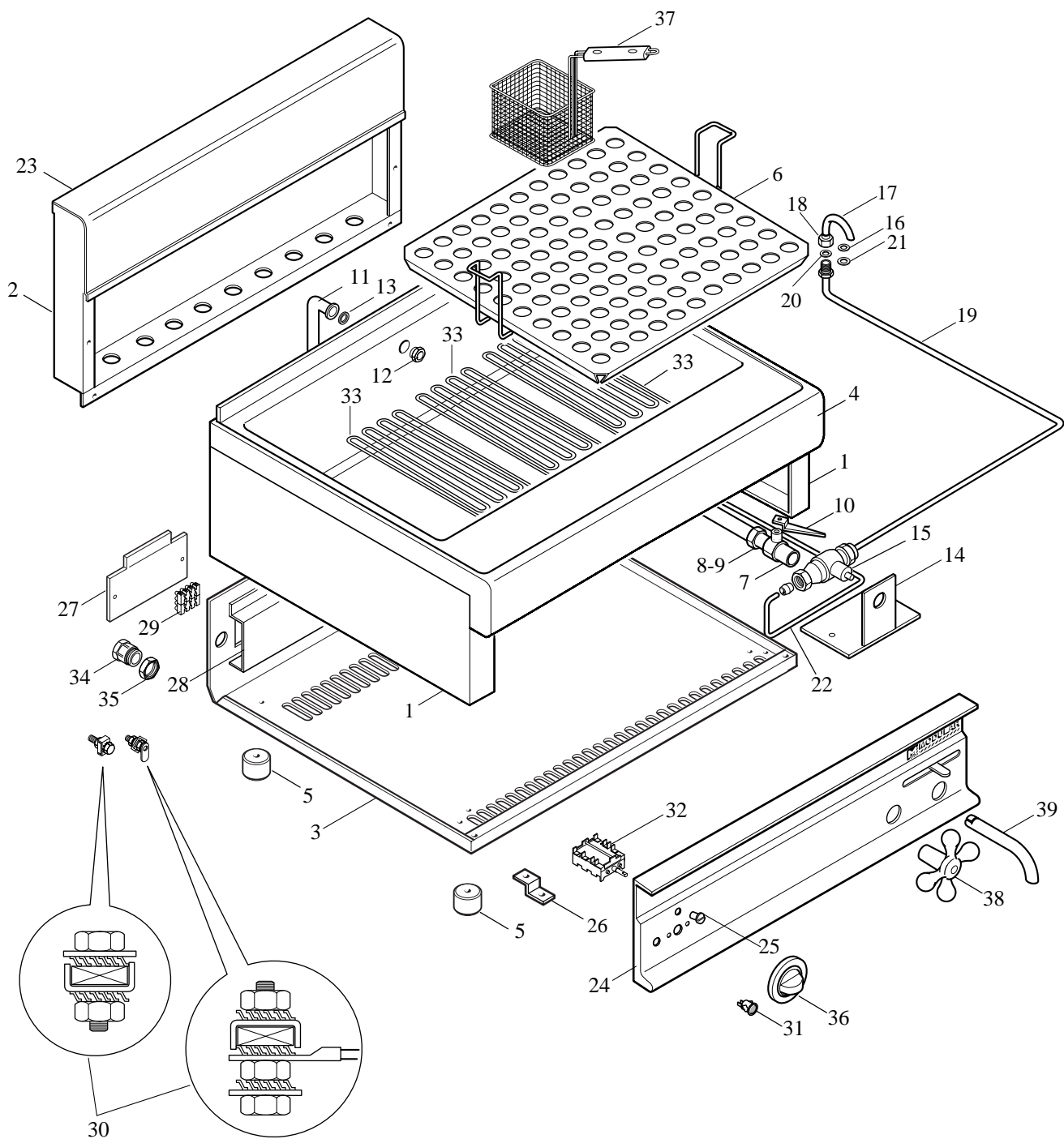
06/2005

Mod: E65/CP7T

Production code: 65/70 CPE



Diamond
catering equipment



ELECTRIC NOODLE COOKER**MOD. 65/70 CPE**

ITEM	CODE	MODIFICATION REF	DESCRIPTION	PRICE
1	621.026.00		Top side panel	
2	621.028.00		Size 70 back panel	
3	622.007.00		Top base 70E	
4	611.465.00		Top-bowl assembly 65/70 CPE	
5	651.001.00		30 Dx20 H foot	
6	611.466.00		Baskets dummy bottom supp. ass. 65/70 CPE	
7	678.001.00		3/4"G drain cock+lock	
8	673.000.00		18 D biconical element for cock	
9	673.010.00		Nut for fitting 18 D biconical element	
10	623.024.00		Right lever for cock	
11	611.468.00		Drain level collector ass. CPE	
12	641.036.00		"M" fitting top drain level CP	
13	0840.30213.0		30 D x 21 x 3 gasket	
14	623.289.00		Stop cock support 65/70 CPE	
15	678.010.00		Stop cock "fig. 632 CONDOR"	
16	0836.18102.0		18 D x 10 x 2 neoprene seal	
17	631.030.00		Bowl water inlet elbow CP	
18	641.040.00		1/2" gas nut for water inlet elbow	
19	611.470.00		Water supply pipe ass. 65/70 CPE	
20	641.041.00		1/2" gas 5 H chromium-plated check nut	
21	0840.20213.0		30 D x 21 x 3 Gasket	
22	611.469.00		Cock coupling pipe ass. 65/40 CPE	
23	611.006.00		Size 70 Neutra rear upstand ass.	
24	611.467.00		Control panel assembly 65/70 CPE	
25	682.003.00		Plate for index	
26	623.002.00		Bracket to fix control panel to top	
27	623.006.00		Cover for terminal board	
28	623.007.00		Terminal board support	
29	663.018.00		PA44 4-pole terminal board	
30	611.320.00		Assembly of gen earth screws/equip.	
31	663.000.00		Luminous green pilot light+tooth	
32	661.037.00		Switch EGO 49.44015.702	
33	665.032.00		Heating element 65/40 CPE 3000W-230V	
34	663.027.00		Relief cable strain PG16 art.V-TEC 16	
35	663.023.00		Check nut PG16 CN 14P	
36	612.015.00		4-position electric knob ass. 62 OD	
37	683.048.00		Basket 140x140x160 for CP	
38	678.012.00		Handle with plate "633 CONDOR"	
39	631.000.00		External drain pipe, 22 D	