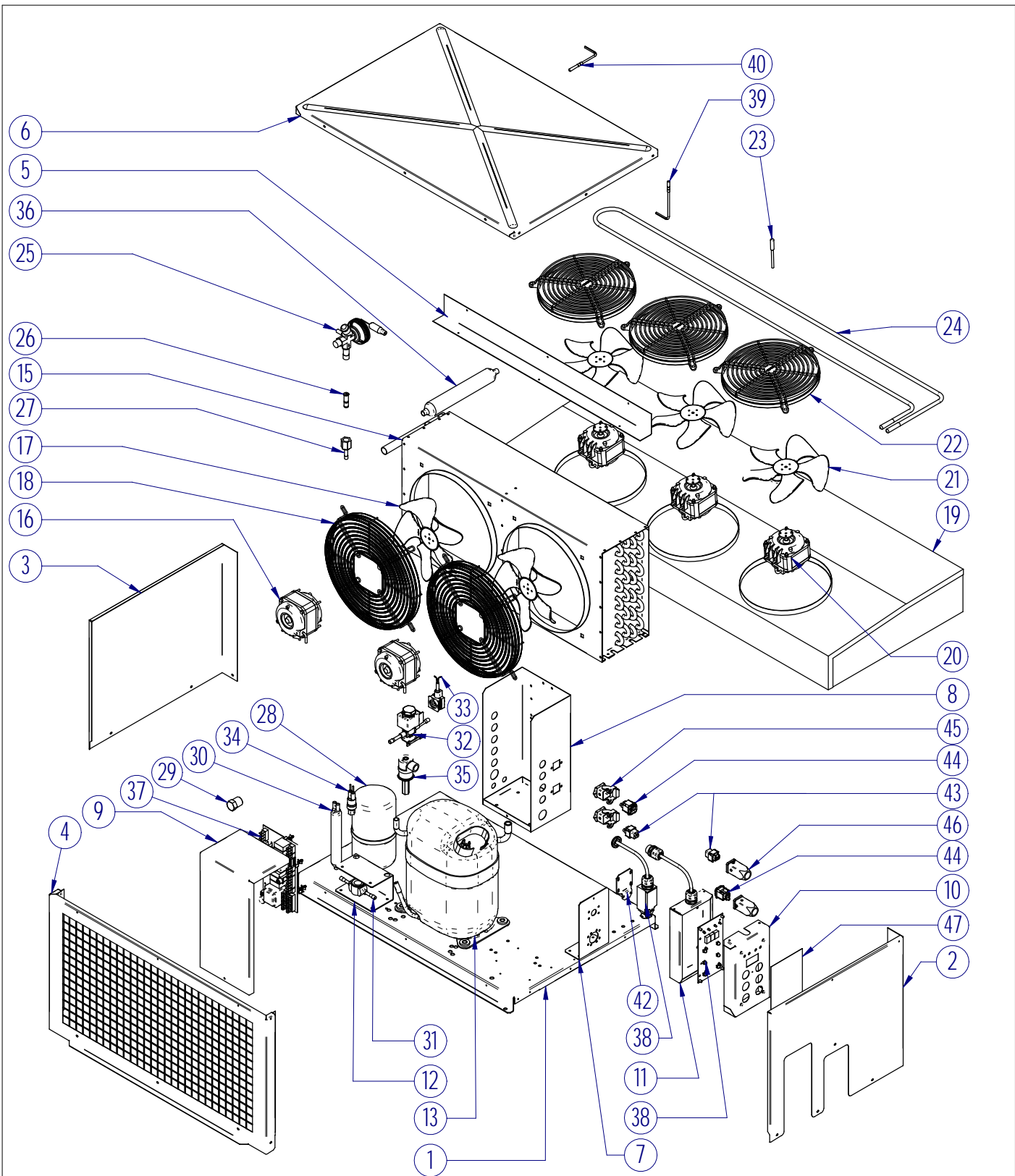


07/2022

Mod: HN170M-1R

Production code: STL006G011-DI



		HP50M-1M HP75-2P HN120M-1Q HN170M-1R							
REV.	DATA	DESCRIZIONE REVISIONE				FIRMA	APPROVATO		
DISEGNATO:		APPROVATO:		DATA:	SCALA: 1:	PESO: Kg.	FILE:		RIF. ESTERNO:
MATERIALE:				CODICE GREZZO:				NUM. INT. ESTERNO:	
RIVESTIMENTO SUPERFICIALE:					SUP. VERN: Mq.		CODICE:		
DENOMINAZIONE:					TAV: 1 Di 1				

MOD.044 REV.01 19/07/01
 RIPRODUZIONE E/O DIFFUSIONE VIETATA

LISTA RICAMBI / SPARE PARTS LIST

Ref.	Descrizione/Description
13	Compressore/Compressor
15	Batteria del condensatore/Condenser coil
16	Motoventilatore del condensatore/Condenser fan motor
17	Ventola del condensatore/Condenser fan
18	Griglia esterna/External fan guard
19	Batteria dell'evaporatore/Evaporator coil
20	Motoventilatore dell'evaporatore/Evaporator fan motor
24	Resistenza di sbrinamento/Defrosting heater
23	Resistenza di scarico/Discharge electrical heater
21	Ventola dell'evaporatore/Evaporator fan
22	Griglia esterna/External fan guard
30	Filtro/Filter
31	Indicatore di umidità/Liquid sight glass
28	Ricevitore di liquido/Liquid receiver
32	Valvola solenoide linea liquido/Liquid line solenoid valve
33	Connettore per solenoide/Solenoid valve connector
25	Bulbo per valvola termostatica/Thermostatic valve bulb
26	Orificio per valvola termostatica/Thermostatic valve orifice
27	Corpo valvola termostatica/Thermostatic valve body
34	Pressostato HBP/HBP pressure switch
37	Scheda base/Main board
38	Tastiera/Keyboard
39	Sonda di temperatura cella/Cold room temperature probe
40	Sonda di fine sbrinamento/End defrost probe
10	Pannello remoto/Remote control panel
41	Interruttore micro porta/Door micro switch

LISTA RICAMBI / SPARE PARTS LIST

Ref.	MODEL	RANGE	COMPONENT	DESCRIPTION	Q.TY
13	HP50M-1M	STM006G001-DI TN R452A 230/1/50	NEK6213GK-A-CSIR	COMP.ASPERA R404A 12,12CC V.220-240/1/50	1
15	HP50M-1M	STM006G001-DI TN R452A 230/1/50	1230600C00	COND.CONV.LAM.36T-3R-600 19188 PA=4	1
16	HP50M-1M	STM006G001-DI TN R452A 230/1/50	NET3C10ZVN006	ELCO 10W V.230/50-60 VDE TIPO3 S/CAVO	2
17	HP50M-1M	STM006G001-DI TN R452A 230/1/50	A254-22	VENTOLA ASPIRANTE DIAM.254/22 SP=1	2
18	HP50M-1M	STM006G001-DI TN R452A 230/1/50	G25035	GRIGLIA IN METALLO D.254 H=35	2
19	HP50M-1M	STM006G001-DI TN R452A 230/1/50	0660550N00	EVAP.6T-6R-550PACCO-PA=5 PER RSV1200605	1
20	HP50M-1M	STM006G001-DI TN R452A 230/1/50	RET8T18PNN002	ELCO 18/62W 230/1/50-60 2600RPM C/COND.	1
24	HP50M-1M	STM006G001-DI TN R452A 230/1/50	RERSV12006-1	RESISTENZA RSV C/SUPP. L=640MM-650W-230V	1
23	HP50M-1M	STM006G001-DI TN R452A 230/1/50	RES2000	RES. MONOUSCITA IN GUAINA L=2500 50W	1
21	HP50M-1M	STM006G001-DI TN R452A 230/1/50	A200-34	VENTOLA ASPIRANTE DIAM.200/34	1
22	HP50M-1M	STM006G001-DI TN R452A 230/1/50	G200CP0	GRIGLIA CIECA IN PLAST.D.200	1
30	HP50M-1M	STM006G001-DI TN R452A 230/1/50	GFN40/62-62/2V	FILTRO RAME G.40 XH9 6,2-6,2 C/2 VALV.	1
31					
28					
32	HP50M-1M	STM006G001-DI TN R452A 230/1/50	EVR3-32F1207	VALV.SOLS/BOB.D06 ODF SALD.	1
33	HP50M-1M	STM006G001-DI TN R452A 230/1/50	99100786	CONN.SOLENOIDE CABL.C/VITE 3G0,75X1000	1
25					
26					
27					
34	HP50M-1M	STM006G001-DI TN R452A 230/1/50	061F8175	MINIPRESS.ALTA R.AUT.28/23 PSH CAVO L=2M	1
37	HP50M-1M	STM006G001-DI TN R452A 230/1/50	RIVB000001	BASE SCHEDA ELETTRONICA BLOCKSYSTEM	1
38	HP50M-1M	STM006G001-DI TN R452A 230/1/50	RIVT000001	TASTIERA SCHEDA ELETTRONICA BLOCKSYSTEM	1
39	HP50M-1M	STM006G001-DI TN R452A 230/1/50	7219-0013	SONDA NTC MEGATRON PVC.NERO.L=1,5M IP68	1
40	HP50M-1M	STM006G001-DI TN R452A 230/1/50	7219-0018	SONDA NTC ACCIAIO L=1,5M D.TESTA=6MM	1
10	HP50M-1M	STM006G001-DI TN R452A 230/1/50	56001753	PANN.REM.5MT S/TAST.RIVB00001 NYLON	1
41	HP50M-1M	STM006G001-DI TN R452A 230/1/50	99103130	FINECORSA MICRO BLOCKSYS 1NC+1NO PIZZA	1

LISTA RICAMBI / SPARE PARTS LIST

Ref.	MODEL	RANGE	COMPONENT	DESCRIPTION	Q.TY
13	HP75M-2P	STM012G001-DI TN R452A 230/1/50	NJ9226GK-V-CSR	COMPRESSORE ASPERA R404A V230/1/50HZ	1
15	HP75M-2P	STM012G001-DI TN R452A 230/1/50	1240600C00	CONDENS.CONV.LAM.48T-4R-600 19170 PA=4	1
16	HP75M-2P	STM012G001-DI TN R452A 230/1/50	NET3C18PVN004	ELCO 18W V.230/50-60 VDE TIPO3 S/CAVO	2
17	HP75M-2P	STM012G001-DI TN R452A 230/1/50	A254-28	VENTOLA ASPIRANTE DIAM.254/28 SP=1	2
18	HP75M-2P	STM012G001-DI TN R452A 230/1/50	G25035	GRIGLIA IN METALLO D.254 H=35	2
19	HP75M-2P	STM012G001-DI TN R452A 230/1/50	0661000N00	EVAP.6T-6R-1000PACCO-PA=5 PER RSV2200605	1
20	HP75M-2P	STM012G001-DI TN R452A 230/1/50	RET8T18PNN002	ELCO 18/62W 230/1/50-60 2600RPM C/COND.	2
24	HP75M-2P	STM012G001-DI TN R452A 230/1/50	RERSV22006-1	RESISTENZA RSV C/SUPP.L=1090MM-1200W-230	1
23	HP75M-2P	STM012G001-DI TN R452A 230/1/50	RES2000	RES. MONOUSCITA IN GUAINA L=2500 50W	1
21	HP75M-2P	STM012G001-DI TN R452A 230/1/50	A200-34	VENTOLA ASPIRANTE DIAM.200/34	2
22	HP75M-2P	STM012G001-DI TN R452A 230/1/50	G200CPO	GRIGLIA CIECA IN PLAST.D.200	2
30	HP75M-2P	STM012G001-DI TN R452A 230/1/50	GFN40/62-62/2V	FILTRO RAME G.40 XH9 6,2-6,2 C/2 VALV.	1
31					
28					
32	HP75M-2P	STM012G001-DI TN R452A 230/1/50	EVR3-32F1207	VALV.SOLS/BOB.D06 ODF SALD.	1
33	HP75M-2P	STM012G001-DI TN R452A 230/1/50	99100786	CONN.SOLENOIDE CABL.C/VITE 3G0,75X1000	1
25					
26					
27					
34	HP75M-2P	STM012G001-DI TN R452A 230/1/50	061F8175	MINIPRESS.ALTA R.AUT.28/23 PSH CAVO L=2M	1
37	HP75M-2P	STM012G001-DI TN R452A 230/1/50	RIVB000001	BASE SCHEDA ELETTRONICA BLOCKSYSTEM	1
38	HP75M-2P	STM012G001-DI TN R452A 230/1/50	RIVT000001	TASTIERA SCHEDA ELETTRONICA BLOCKSYSTEM	1
39	HP75M-2P	STM012G001-DI TN R452A 230/1/50	7219-0013	SONDA NTC MEGATRON PVC.NERO.L=1,5M IP68	1
40	HP75M-2P	STM012G001-DI TN R452A 230/1/50	7219-0018	SONDA NTC ACCIAIO L=1,5M D.TESTA=6MM	1
10	HP75M-2P	STM012G001-DI TN R452A 230/1/50	56001753	PANN.REM.5MT S/TAST.RIVB00001 NYLON	1
41	HP75M-2P	STM012G001-DI TN R452A 230/1/50	99103130	FINECORSA MICRO BLOCKSYS 1NC+1NO PIZZA	1

LISTA RICAMBI / SPARE PARTS LIST

Ref.	MODEL	RANGE	COMPONENT	DESCRIPTION	Q.TY
13	HN120M-1Q	STL003G011-DI BT R452A 230/1/50	NEU2178GK-A-CSR	COMP.ASPERA R404A 16,8CC V.220-240/1/50	1
15	HN120M-1Q	STL003G011-DI BT R452A 230/1/50	1120600C00	CONDENS.CONV.LAM.22T-2R-600 P.A.=4 30305	1
16	HN120M-1Q	STL003G011-DI BT R452A 230/1/50	NET3C10ZVN006	ELCO 10W V.230/50-60 VDE TIPO3 S/CAVO	2
17	HN120M-1Q	STL003G011-DI BT R452A 230/1/50	A254-22	VENTOLA ASPIRANTE DIAM.254/22 SP=1	2
18	HN120M-1Q	STL003G011-DI BT R452A 230/1/50	G25035	GRIGLIA IN METALLO D.254 H=35	2
19	HN120M-1Q	STL003G011-DI BT R452A 230/1/50	0640550N00	EVAP.6T-4R-550PACCO-PA=5 PER RSV1200405	1
20	HN120M-1Q	STL003G011-DI BT R452A 230/1/50	RET8T18PNN002	ELCO 18/62W 230/1/50-60 2600RPM C/COND.	1
24	HN120M-1Q	STL003G011-DI BT R452A 230/1/50	RERSV12006-1	RESISTENZA RSV C/SUPP. L=640MM-650W-230V	1
23	HN120M-1Q	STL003G011-DI BT R452A 230/1/50	RES2000	RES. MONOUSCITA IN GUAINA L=2500 50W	1
21	HN120M-1Q	STL003G011-DI BT R452A 230/1/50	A200-34	VENTOLA ASPIRANTE DIAM.200/34	1
22	HN120M-1Q	STL003G011-DI BT R452A 230/1/50	G200CPO	GRIGLIA CIECA IN PLAST.D.200	1
30	HN120M-1Q	STL003G011-DI BT R452A 230/1/50	GFN40/62-62/2V	FILTRO RAME G.40 XH9 6,2-6,2 C/2 VALV.	1
31	HN120M-1Q	STL003G011-DI BT R452A 230/1/50	SGN6S	IND.LIQUIDO SALD.D. 6 ODF 014-0191	1
28	HN120M-1Q	STL003G011-DI BT R452A 230/1/50	100/200V500	RIC.LIQ.SALD.LT.1,30 CL=0 TS-10/100	1
32	HN120M-1Q	STL003G011-DI BT R452A 230/1/50	EVR3-32F1207	VALV.SOL.S/BOB.D06 ODF SALD.	1
33	HN120M-1Q	STL003G011-DI BT R452A 230/1/50	99100786	CONN.SOLENOIDE CABL.C/VITE 3G0,75X1000	1
25	HN120M-1Q	STL003G011-DI BT R452A 230/1/50	7350-0105	VALV.TERM.R452A EQ.EST SALD 12MM	1
26	HN120M-1Q	STL003G011-DI BT R452A 230/1/50	7355-0002	RFKH-023-00 C/FILTRO X VALV.TERMOST	1
27	HN120M-1Q	STL003G011-DI BT R452A 230/1/50	RFK-A04-038013	ADATTATORE FLANG/SALD 3/8SAE X 6 ODF	1
34	HN120M-1Q	STL003G011-DI BT R452A 230/1/50	061F8175	MINIPRESS.ALTA R.AUT.28/23 PSH CAVO L=2M	1
37	HN120M-1Q	STL003G011-DI BT R452A 230/1/50	RIVB000001	BASE SCHEDA ELETTRONICA BLOCKSYSTEM	1
38	HN120M-1Q	STL003G011-DI BT R452A 230/1/50	RIVT000001	TASTIERA SCHEDA ELETTRONICA BLOCKSYSTEM	1
39	HN120M-1Q	STL003G011-DI BT R452A 230/1/50	7219-0013	SONDA NTC MEGATRON PVC.NERO.L=1,5M IP68	1
40	HN120M-1Q	STL003G011-DI BT R452A 230/1/50	7219-0018	SONDA NTC ACCIAIO L=1,5M D.TESTA=6MM	1
10	HN120M-1Q	STL003G011-DI BT R452A 230/1/50	56001753	PANN.REM.SMT S/TAST.RIVB00001 NYLON	1
41	HN120M-1Q	STL003G011-DI BT R452A 230/1/50	99103130	FINECORSIA MICRO BLOCKSYS 1NC+1NO PIZZA	1

LISTA RICAMBI / SPARE PARTS LIST

Ref.	MODEL	RANGE	COMPONENT	DESCRIPTION	Q.TY
13	HN170M-1R	STL006G011-DI BT R452A 230/1/50	NJ2192GJ-A-CSR	COMP.EMBRACO R404A 26,0CC 220-240/50	1
15	HN170M-1R	STL006G011-DI BT R452A 230/1/50	1230600C00	COND.CONV.LAM.36T-3R-600 19188 PA=4	1
16	HN170M-1R	STL006G011-DI BT R452A 230/1/50	NET3C10ZVN006	ELCO 10W V.230/50-60 VDE TIPO3 S/CAVO	2
17	HN170M-1R	STL006G011-DI BT R452A 230/1/50	A254-22	VENTOLA ASPIRANTE DIAM.254/22 SP=1	2
18	HN170M-1R	STL006G011-DI BT R452A 230/1/50	G25035	GRIGLIA IN METALLO D.254 H=35	2
19	HN170M-1R	STL006G011-DI BT R452A 230/1/50	0660550N00	EVAP.6T-6R-550PACCO-PA=5 PER RSV1200605	1
20	HN170M-1R	STL006G011-DI BT R452A 230/1/50	RET8T18PNN002	ELCO 18/62W 230/1/50-60 2600RPM C/COND.	1
24	HN170M-1R	STL006G011-DI BT R452A 230/1/50	RERSV12006-1	RESISTENZA RSV C/SUPP. L=640MM-650W-230V	1
23	HN170M-1R	STL006G011-DI BT R452A 230/1/50	RES2000	RES. MONOUSCITA IN GUAINA L=2500 50W	1
21	HN170M-1R	STL006G011-DI BT R452A 230/1/50	A200-34	VENTOLA ASPIRANTE DIAM.200/34	1
22	HN170M-1R	STL006G011-DI BT R452A 230/1/50	G200CP0	GRIGLIA CIECA IN PLAST.D.200	1
30	HN170M-1R	STL006G011-DI BT R452A 230/1/50	GFN40/62-62/2V	FILTRO RAME G.40 XH9 6,2-6,2 C/2 VALV.	1
31	HN170M-1R	STL006G011-DI BT R452A 230/1/50	SGN6S	IND.LIQUIDO SALD.D. 6 ODF 014-0191	1
28	HN170M-1R	STL006G011-DI BT R452A 230/1/50	100/200V500	RIC.LIQ.SALD.IT.1,30 CL=0 TS-10/100	1
32	HN170M-1R	STL006G011-DI BT R452A 230/1/50	EVR3-32F1207	VALV.SOLS/BOB.D06 ODF SALD.	1
33	HN170M-1R	STL006G011-DI BT R452A 230/1/50	99100786	CONN.SOLENOIDE CABL.C/VITE 3G0,75X1000	1
25	HN170M-1R	STL006G011-DI BT R452A 230/1/50	7350-0105	VALV.TERM.R452A EQ.EST SALD 12MM	1
26	HN170M-1R	STL006G011-DI BT R452A 230/1/50	7355-0003	RFKH-023-01 C/FILTRO X VALV.TERMOST.	1
27	HN170M-1R	STL006G011-DI BT R452A 230/1/50	RFK-A04-038013	ADATTATORE FLANG/SALD 3/8SAE X 6 ODF	1
34	HN170M-1R	STL006G011-DI BT R452A 230/1/50	061F8175	MINIPRESS.ALTA R.AUT.28/23 PSH CAVO L=2M	1
37	HN170M-1R	STL006G011-DI BT R452A 230/1/50	RIVB000001	BASE SCHEDA ELETTRONICA BLOCKSYSTEM	1
38	HN170M-1R	STL006G011-DI BT R452A 230/1/50	RIVT000001	TASTIERA SCHEDA ELETTRONICA BLOCKSYSTEM	1
39	HN170M-1R	STL006G011-DI BT R452A 230/1/50	7219-0013	SONDA NTC MEGATRON PVC.NERO.L=1,5M IP68	1
40	HN170M-1R	STL006G011-DI BT R452A 230/1/50	7219-0018	SONDA NTC ACCIAIO L=1,5M D.TESTA=6MM	1
10	HN170M-1R	STL006G011-DI BT R452A 230/1/50	56001753	PANN.REM.5MT S/TAST.RIVB00001 NYLON	1
41	HN170M-1R	STL006G011-DI BT R452A 230/1/50	99103130	FINECORSA MICRO BLOCKSYS 1NC+1NO PIZZA	1