

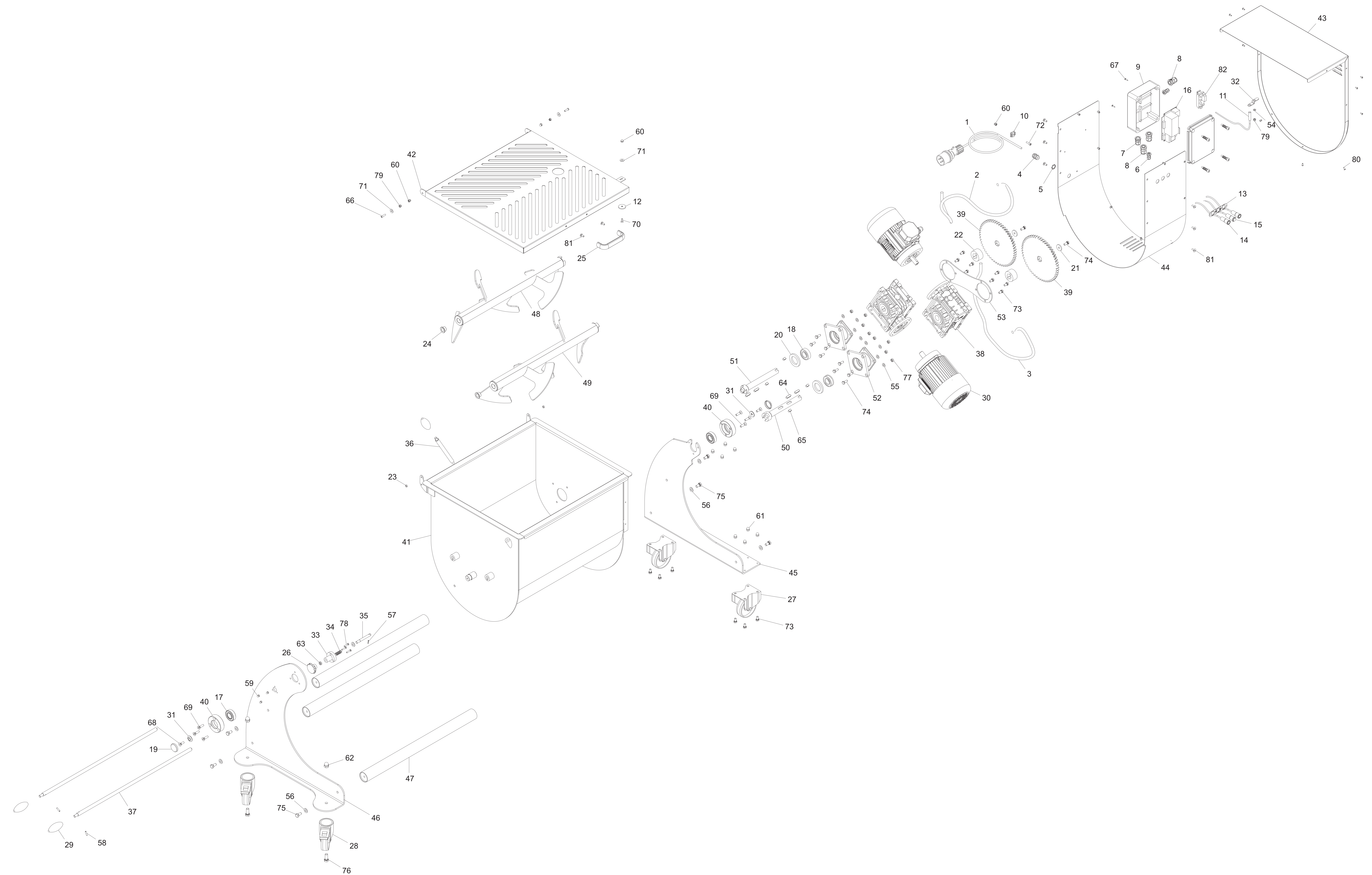
07/2015

Mod: MCR-120P/N

Production code: 40807003F



Diamond
catering equipment



| IP 120 XP BA 230/50/1 - from '15.07.01 | | |
|--|-------------------------------------|--------------|
| Ref. | Product name | Code |
| 1 | CAVO + SPINA CEE 2P + T | LF1010050 |
| 2 | POWER LEAD, MOTOR TF/1,5 | LF1010055 |
| 3 | POWER LEAD, MOTOR TF/1,5 | LF1010055 |
| 4 | STRAIN RELIEF + NUT | LF1010063 |
| 5 | DADO OTT.NICH.PG 11 | LF1010063A |
| 6 | PRESSACAVO PLASTICA PG7 | LF1010068 |
| 7 | PRESSACAVO PLASTICA PG 11 | LF1010072 |
| 8 | PRESSACAVO + DADO PLASTICA PG 13,5 | LF1010075 |
| 9 | BOX GW 44207 | LF1010704 |
| 10 | MORSETTO A PETTINE X EQUIPOTENZ. BZ | LF1030522050 |
| 11 | MICROSWITCH _SO INOX/IP BA/TC32F/GF | LF1033302 |
| 12 | MAGNET M634 | LF1039710 |
| 13 | FRAME FOR 3 BUTTONS S/S PANEL | LF1041003 |
| 14 | S/S BUTTON W/LIGHT OMEGA 24 V | LF1041015 |
| 15 | S/S BUTTON STOP | LF1041018 |
| 16 | CIRCUIT BOARD R3+AUTOM EQ_IP BA XP | LF1044510 |
| 17 | CUSCINETTO 6205 ZZ | LF1140001 |
| 18 | CUSCINETTO REG. SP 7205 ME 80 EVO | LF1144504 |
| 19 | CAP 40/7/C PULLEY 1C SO1650 | LF1201001 |
| 20 | GASKET 40-62-7 FOR MINCER | LF1239401 |
| 21 | RONDELLA ZINC. M8X30 H4 | LF1344501 |
| 22 | DIST. RID-CORONA DENT. ME 80 EVO | LF1444510 |
| 23 | DIST. PLAST. COP. 10X6X4 ME BA EVO | LF1444515 |
| 24 | BOCCOLA FLANG. JFM-1622-12 TCM-ME | LF1493415 |
| 25 | HANDLE 236-148 M6_COLLECTION TRAY | LF1510010 |
| 26 | KNOB FOR FIXING CONTAINER_IP 50-100 | LF1541001 |
| 27 | S/S WHEEL D.100 FOR M.MIXER/MINCER | LF1541005 |
| 28 | RUOTA MOBILE CON FREN D 100 C/PERNO | LF1544501 |
| 29 | KNOB P02 M10_IP 80BA/G3S/SA | LF1564001 |
| 30 | MOT. PAM 80 B 14 4 POLI MONO ME EVO | LF1844603 |
| 31 | WASHER FOR BONE SAW SO 1650 INOX | LF2001028 |
| 32 | DOOR SUPPORT FOR MICROSWITCH | LF2007019 |
| 33 | CANOTTO FERMA CULLA IP | LF2041029 |
| 34 | SPRING | LF2041031 |
| 35 | PIN | LF2041037 |
| 36 | LEVER ROD FOR CONTAINER OVERTURNING | LF2041049 |
| 37 | ASTA PALA IX ME 120 KG BIALBERO | LF2041625 |
| 38 | RIDUTTORE MRV 063 B14 R=49 ME | LF2043040 |
| 39 | CORONA DENTATA ME 80 EVO | LF2044545 |
| 40 | SUPP. CUSC. RIB. LATO SX EVO BIALB | LF2044560 |
| 41 | CULLA INOX ME 120 EVO BIALB | LF2044601 |
| 42 | COPERCHIO VASCA ME 120 EVO BIALB | LF2044605 |
| 43 | CARTER MOTORE ME 120 EVO BIALB | LF2044609 |
| 44 | FASCIA CARTER MOT. ME 120 EVO BIALB | LF2044610 |
| 45 | BASE DX RID. ME 120 EVO BIALB | LF2044613 |
| 46 | BASE SX ME 120 EVO BIALB | LF2044616 |
| 47 | TUBO UNIONE BASI ME 120 EVO BIALB | LF2044620 |

| | | |
|----|------------------------------------|-----------------|
| 50 | PERNO TRASC.FEMM L=220 ME 120 EVO | LF2044631 |
| 51 | PERNO TRASC.MASC L=220 ME 120 EVO | LF2044634 |
| 52 | FLANGIA MOTORID | LF2044636 |
| 53 | STAFFA BLOCCO RIDUTTORI ME 120 EVO | LF2044646 |
| 54 | WASHER DIN 125 D 6 | IX2125006 |
| 55 | WASHER DIN 125 D 8 | IX2125008 |
| 56 | RONDELLA PIANA DIN 125 D 10 | IX2125010 |
| 57 | SPINA ELASTICA DIN 1481 3X18 | IX21481003018 |
| 58 | SPINA ELASTICA DIN 1481 5X20 | IX21481005020 |
| 59 | BLIND NUT DIN 1587 M5 | IX21587LC005 |
| 60 | DADO CIECO DIN 1587 M 6 | IX21587LC006 |
| 61 | DADO CIECO DIN 1587 M 8 | IX21587LC008 |
| 62 | DADO CIECO DIN 1587 M 12 | IX21587LC012 |
| 63 | DADO ES. DIN 439 M 10 BASSO | IX2439010 |
| 64 | LINGUETTE DIN 6885/A 8X7X28 | IX26885A080728 |
| 65 | LINGUETTE DIN 6885/AB 8X7X16 | IX26885AB080716 |
| 66 | VITE TBEI ISO 7380 M 6X25 | IX27380006025 |
| 67 | VITE AUTOF.TCB+ DIN 7981 D 3,5X16 | IX279813,5016 |
| 68 | SCREW TSPEI DIN 7991 M 8X20 | IX27991008020 |
| 69 | VITE TSPEI DIN 7991 M 8X30 | IX27991008030 |
| 70 | VITE TSP TORX DIN 7991 M 6X16 TX30 | IX27991PINTX616 |
| 71 | WASHER F.LARGE DIN 9021 D 6X18 | IX29021006018 |
| 72 | SCREW TCEI DIN 912 M 6X20 | IX2912006020 |
| 73 | VITE TE DIN 933 M 8X16 T.F. | IX2933008016 |
| 74 | VITE TE DIN 933 M 8X20 T.F. | IX2933008020 |
| 75 | VITE TE DIN 933 M 10X20 T.F. | IX2933010020 |
| 76 | VITE TE DIN 933 M 12X30 T.F. | IX2933012030 |
| 77 | HEX.NUT DIN 934 M8 | IX2934008 |
| 78 | VITE TSP- DIN 963 M 5X25 | IX2963005025 |
| 79 | LOCKNUT ES DIN 982 M6 ALTO | IX2982006 |
| 80 | VITE POELIERS M 4X10 | IX2POEL004010 |
| 81 | VITE POELIERS M 6X10 | IX2POEL006010 |
| 82 | SCHEDA PROT. SOVRACORRENTE EQ. | LF1033036 |