

03/2015

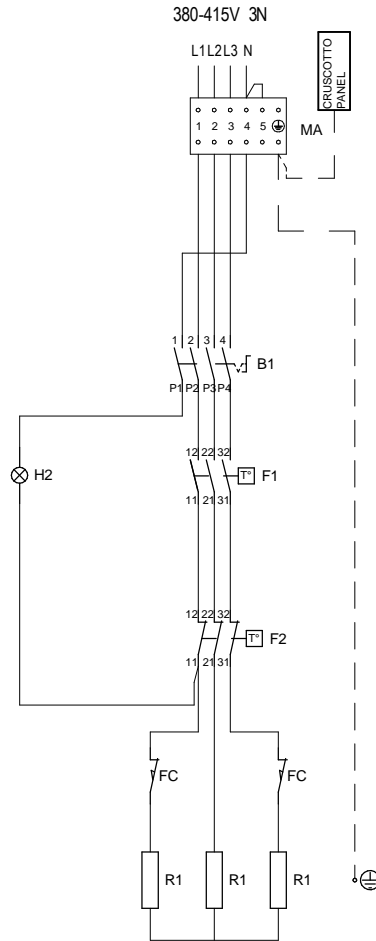
# Mod: EDI/F104

Production code: 65/40 FRE10-D

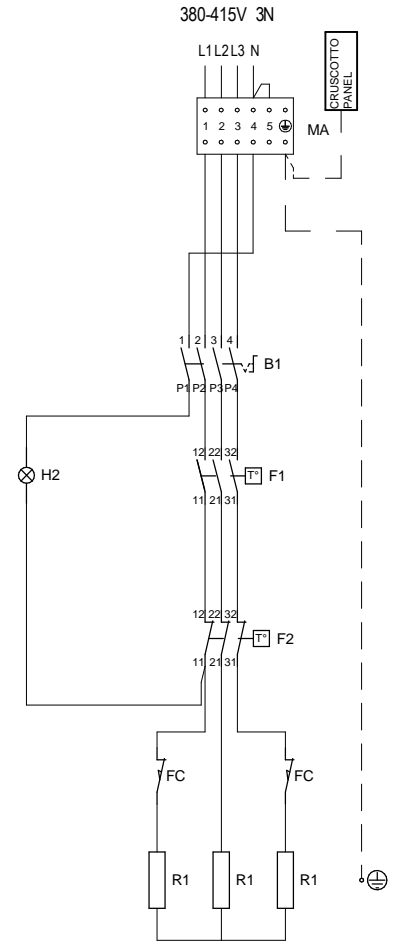
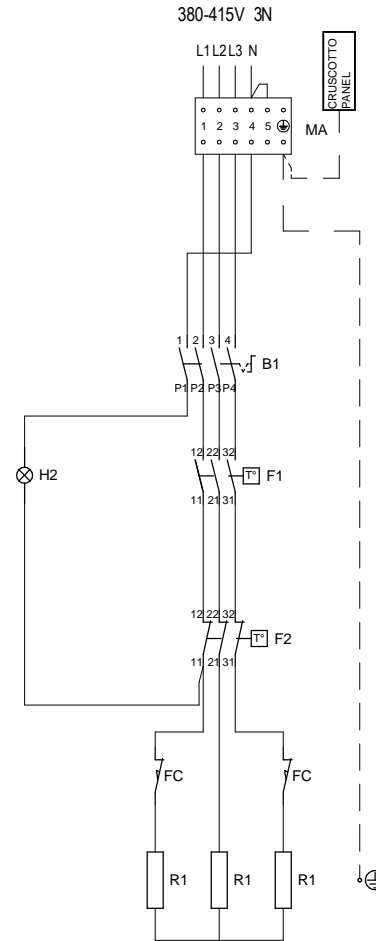


**Diamond**  
catering equipment

Mod.	kW	Volt	Ampere	Hz	Cable	NOTE
60/40 FRE10-D	7,5	380-415V 3N	11,5	50-60	5G1,5mm <sup>2</sup>	
65/40 FRE10-D	7,5	380-415V 3N	11,5	50-60	5G1,5mm <sup>2</sup>	



Mod.	kW	Volt	Ampere	Hz	Cable	NOTE
60/60 FRE10-D	7,5 (x2)	380-415V 3N	11,5 (x2)	50-60	5G2,5mm <sup>2</sup> (x2)	
65/70 FRE10-D	7,5 (x2)	380-415V 3N	11,5 (x2)	50-60	5G2,5mm <sup>2</sup> (x2)	



B1	INTERRUTTORE _ INTERRUPTEUR SWITCH _ SCHALTER _ INTERRUPTOR
F1	TERMOSTATO _ THERMOSTAT TERMOSTATO
F2	TERMOSTATO SICUREZZA _ THERMOSTAT DE SECURITE SAFETY THERMOSTAT _ TEMPERATURBEGRENZER _ TERMOSTATO DE SEGURIDAD
FC	MICROINTERRUTTORE _ MICROINTERRUPTEUR MICROSWITCH _ SICHERUNGSSCHALTER _ MICROINTERRUPTOR

H2	LAMPADA SPIA ARANCIO _ LAMPE TMOIN ORANGE _ ORANGE INDICATOR LIGHT _ ORANGE KONTROLLAMPE _ INDICADOR LUMINOSO NARANJA
MA	MORSETTIERA ARRIVO LINEA _ POWER INLET TERMINAL BOARD ANSCHLUSSBRETT _ BORNES ARRIVE LIGNE _ BLOQUE TERMINAL LINEA
R1	RESISTENZA _ HEATING ELEMENT HEIZKOERPER _ RESISTANCE _ RESISTENCIA



Prima di intervenire sull'apparecchiatura, scollegare l'alimentazione elettrica - Unplug the power supply before operating on the appliance  
 Bevor am gerät arbeiten ausschalten sré die elektrische speisung  
 Avant d'intervenir sur l'appareil, déconnectez l'alimentation électrique - Desconnectar el alimentación antes cualquier intervención sobre el aparato

MODELLO:

**FRIGGITRICE ELETTRICA - FRITEUSE -  
ELECTRIC FRYER - ELEKTRO FRITEUSE -  
FREIDORA ELÉCTRICA**

nome:	data:	modif.:
Lot F.	13/03/2015	
CODICE:	<b>2511000.13</b>	FOGLIO: 1/1