

06/2017

# Mod: ML65-PU

Production code: LM 65 PEDP



**Diamond**  
catering equipment

— WIRES IN ALL MACHINES  
 - - WIRES IN SOME MACHINES  
 - - - INTERNAL CONNECTION

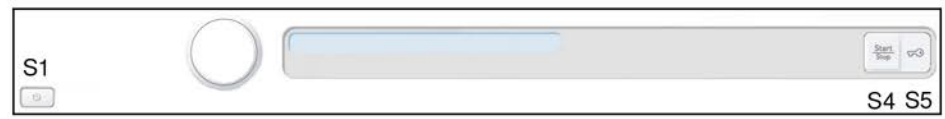
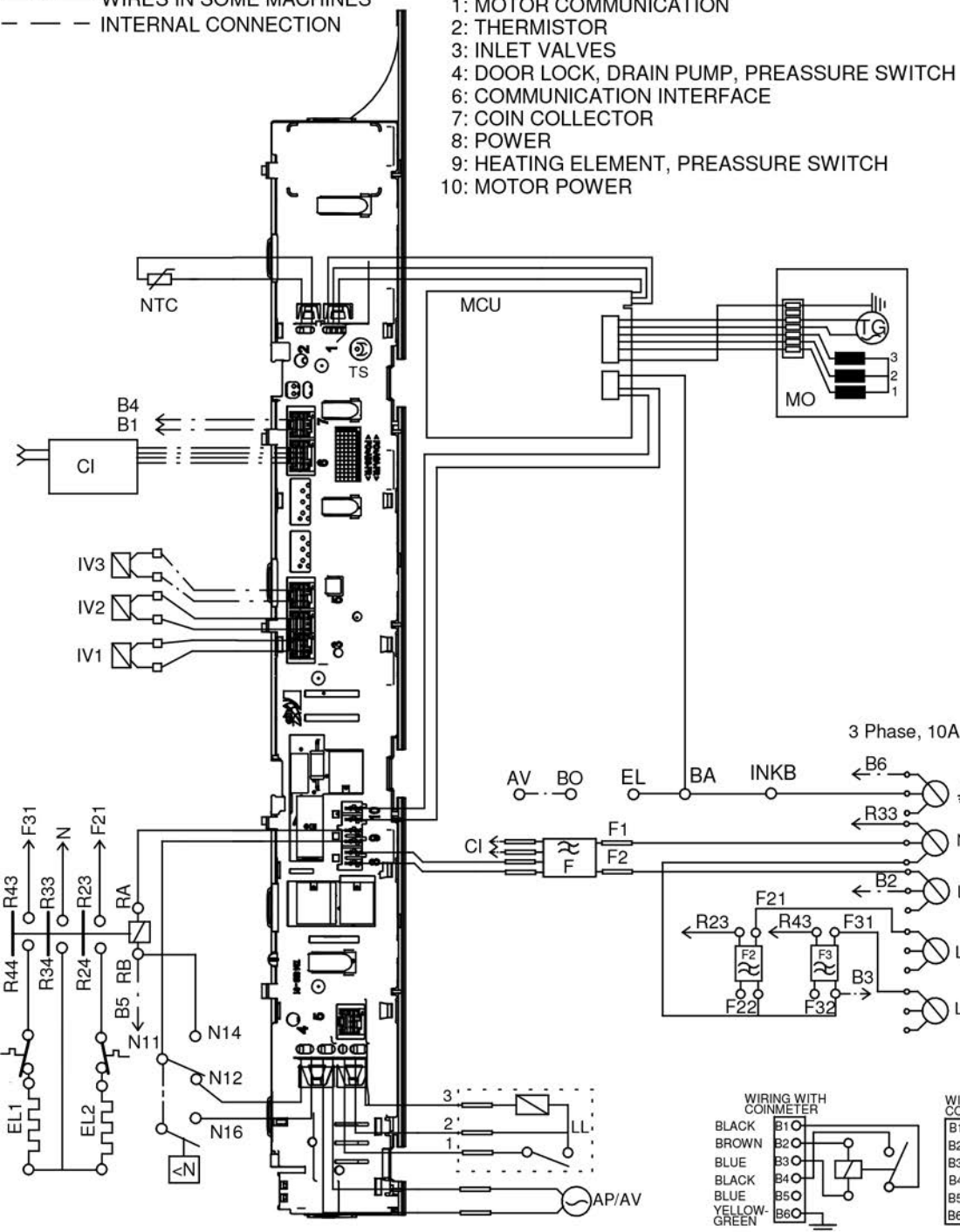
**CABLE POSITIONS**  
 1: MOTOR COMMUNICATION  
 2: THERMISTOR  
 3: INLET VALVES  
 4: DOOR LOCK, DRAIN PUMP, PREASSURE SWITCH  
 6: COMMUNICATION INTERFACE  
 7: COIN COLLECTOR  
 8: POWER  
 9: HEATING ELEMENT, PREASSURE SWITCH  
 10: MOTOR POWER

VALUES WITHIN +/-10% ARE REGARDED AS NORMAL COMPONENT

F: RADIO INTERFERENCE SUPPRESSION FILTER 680K Ohm  
 EL: HEATING ELEMENT 25 Ohm  
 AP: DRAIN PUMP 50 Hz 144 Ohm  
 AP: DRAIN PUMP 60 Hz 76 Ohm  
 AV: DRAIN VALVE 110/134 Ohm  
 LL: DOOR LOCK, 1-2 122 Ohm  
 NTC: THERMISTOR 6.1 - 3.8 K Ohm  
 IV 1: INLET VALVE 1 3.7 K Ohm  
 IV 2: INLET VALVE 2 3.7 K Ohm  
 IV3: INLET VLAVE 3 3.5 K Ohm  
 MO: MOTOR, 1-3 4,3±7% Ohm  
                   1-2 4,3±7% Ohm  
                   2-3 4,3±7% Ohm

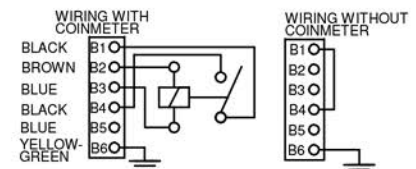
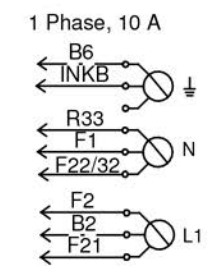
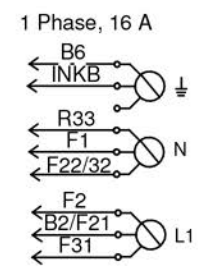
MCU: MOTOR CONTROL UNIT  
 N: PRESSURE SWITCH  
 TS: PRESSURE SENSOR  
 TG: TACHO GENERATOR  
 BA: CONTAINER  
 INKB: INCOMING GROUND  
 CI: COMMUNICATIONS INTERFACE

**USER SETTINGS MENU**  
 TURN OFF POWER (S1)  
 WAIT FOR AT LEAST 5 SEC  
 HOLD S5  
 TURN ON POWER (S1)  
 PRESS S5 5 TIMES TO ENTER MENU



**SERVICE MENU**  
 TURN OFF POWER (S1)  
 WAIT FOR AT LEAST 5 SEC  
 HOLD S4  
 TURN ON POWER (S1)  
 PRESS S4 5 TIMES TO ENTER SERVICE MENU

PRESS DOOR OPENING (S5) TO CHANGE MENU STEP  
 ROTATE DIAL TO CHANGE IN STEP  
 PRESSING START/STOP (S4) STORES AND EXITS SERVICE MENU



2010-05-20

CIRCUIT DIAGRAM WM70.C  
**80 886 19 - 01**

This document must not be copied without our written permission, and the contents thereof must not be imparted to a third party nor be used for any unauthorized purpose. Contravention will be prosecuted. Asko Appliance AB